



DESCRIPTION

The PH300 Series OTDR is designed with a lightweight and user-friendly graphical user interface. PH300 Series OTDR offer accurate and complete fiber evaluation, which allows error-free testing with single button operation. It is cost effective, with high resolution and compact in size.

Suitable for installation, operation and maintenance of optical networks.

FEATURES

- Hand-held and portable
- High performance and cost-effective model
- 5-inch HD touch screen
- Simple interface and single-button operation
- Long battery operations
- Optical Link Explorer™ (OLE™) is used enabled to simplify analyzing

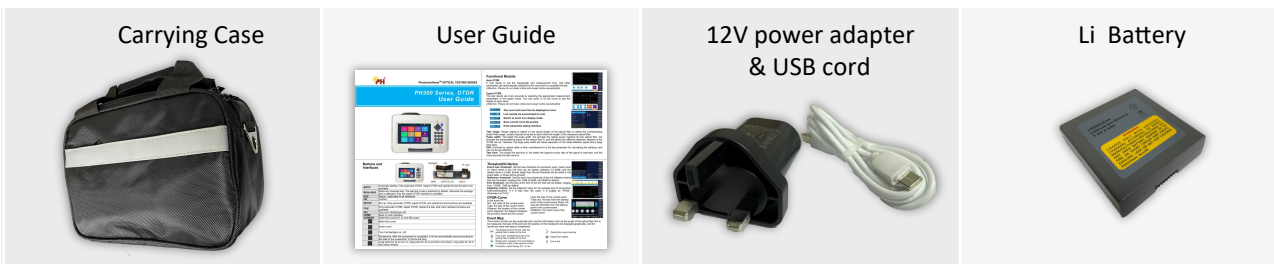
APPLICATIONS

- Real-time troubleshooting
- Access network testing
- LAN/WAN network testing
- CATV network testing
- Metro network testing
- Lab and factory testing

SPECIFICATIONS

Item	Description
Display	5 inch TFT-LCD (touch screen)
Battery*	7.4V/3300mAh lithium battery (with air traffic certification) Continuously test : 6 hours (back light off) Charging time : 3.5 hours
Data Storage	40,000 traces
Interface	3xUSB port (USB A Type x 2, Micro-USB x 1)
Working Temperature	-10°C ~+ 50°C
Storage Temperature	-20°C ~+ 70°C
Humidity	≤95% (Non-condensing)
Dimension	195 x 141 x 44mm / 0.9kg (battery included)
OPM MODULE	
Wavelength Range (nm)	800 ~ 1700
Calibrated Wavelength (nm)	850/1300/1310/1490/1550/1625/1650
Measurement Range (dBm)	-60 ~ +5
Resolution (dB)	0.01
Uncertainty (dB)	±0.35dB ±1nW
Modulation	270/1k/2k Hz, Pi≥-40dBm
Connector	Universal Adaptor

STANDARD ACCESSORIES



OPTIONAL ACCESSORIES

Part No	Description
FL-A1-1000-SCA-SCU	Fiber Launcher, G657A1, 1000m, SC/APC-SC/UPC

Note : Specifications are subject to change without notice

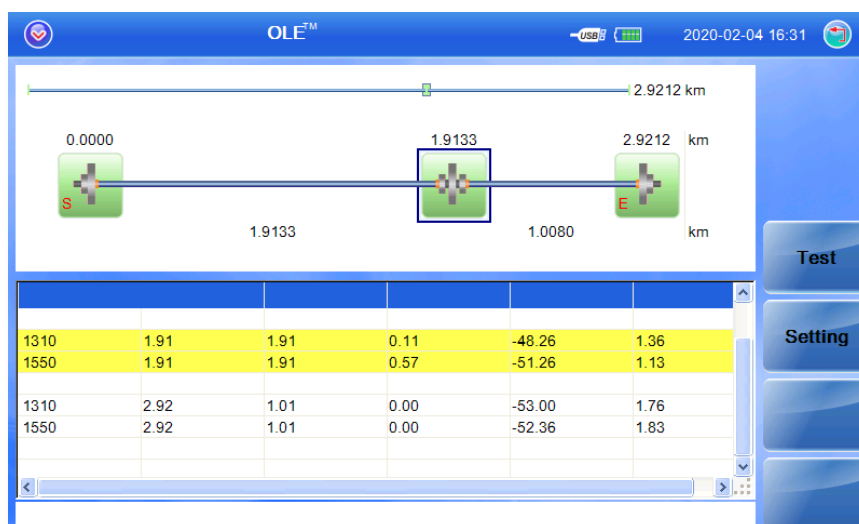
TECHNICAL PARAMETER	
Pulse Width	3ns, 5ns, 10ns, 20ns, 50ns, 100ns, 200ns, 500ns, 1μs, 2μs, 5μs, 10μs, 20μs
Distance Range	100m, 500m, 2km, 5km, 10km, 20km, 40km, 80km, 120km, 160km, 240km
Sampling Resolution	Minimum 5cm
Sampling Point	Maximum 128,000 points
Linearity (dB)	≤0.05dB/dB
Scale Indication	X axis : 4~70m/div, Y axis ; 0.09 ~ 5dB/div
Loss Resolution (dB)	0.001
Readout Resolution (cm)	1
Distance Measurement Accuracy	±(1m + measuring distance x 3 x 10 ⁻⁵ + sampling resolution)
Group Refractive Index	1.2000 ~ 1.5999, 0.0001 step

OPTICAL LINK EXPLORER™ (OLE™)

The OLE™ Test was developed using multiple pulse width acquisitions and advanced algorithms to characterize the fiber-under-test and display the events using iconic symbols.

FEATURES

- Complex OTDR results are displayed in easy-to-understand iconic symbols
- Easy to use, single button operation, automatic analysis and intuitive link map display
- Automatic multiple pulse width and wavelength acquisition
- Identify each event on the fiber, automatically including splicing points, macro bends, connectors and optical splitters.



Model	Wavelength	Dynamic Range	Dead-zone
PH300-D26	1310/1550nm	26/24dB	3/8m
PH300-D30		30/28dB	1/5m
PH300-D35		35/33dB	1/5m
PH300-SA30F	1650nm	30dB	1/6m
PH300-SA35F		35dB	1/6m
PH300-SA38F		38dB	1/6m
PH300-SP30F	1625nm	30dB	1/6m
PH300-SP35F		35dB	1/6m
PH300-SP38F		38dB	1/6m

ORDERING INFORMATION

Example : PH300-D26FCU1

