

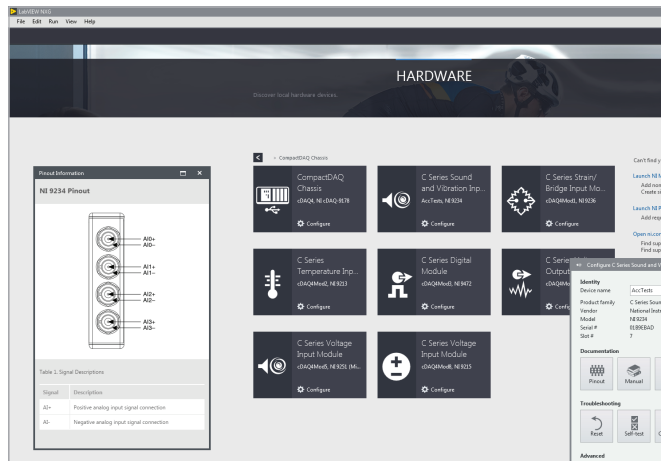
Introducing the Next Generation of LabVIEW: LabVIEW NXG 1.0



With engineering workflows for interactively acquiring, analyzing, and visualizing measurements, LabVIEW NXG 1.0 is the ideal tool for turning data collection into real insights, whether you program or not.

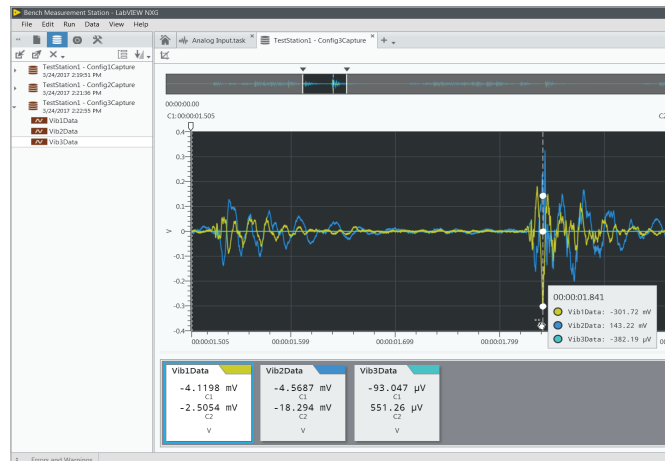
Faster Measurements. Instant Insights. Programming Optional.

With the initial release of LabVIEW NXG, you can minimize your time to measurement with data acquisition devices and benchtop instruments using nonprogramming workflows for acquiring and visualizing data sets. Then when needed, use the same hardware and analysis configurations to rapidly transition to automated, repeated measurements with a native development environment.



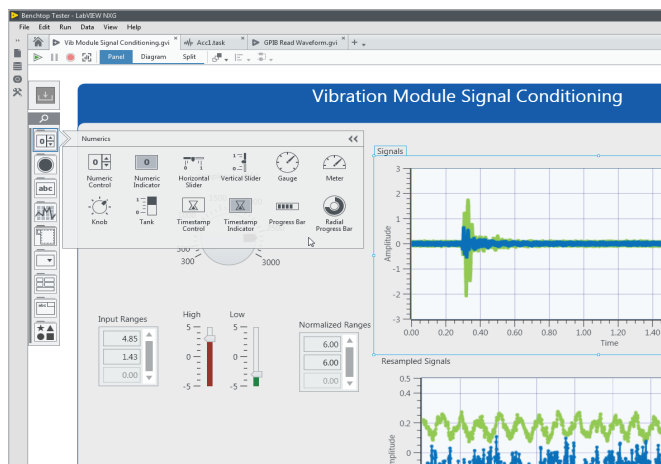
Take Your First Measurement Faster

Minimize the time to your first measurement using hardware auto-discovery and interactive panels—programming optional.



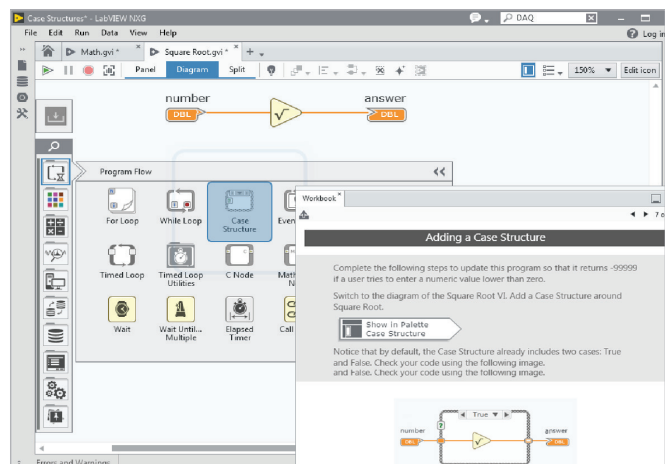
Gain Instant Insight From Your Engineering Data

Rapidly gain insight into real-world signals using integrated data capture and analysis tools.



Accelerate Your Development With an Engineering Editor

Reduce your development time for common tasks, such as UI design and diagram programming, using coding features for accelerating engineering productivity.



Quickly Learn What's Needed to Build Your Project

Finish your next project faster with interactive in-product learning and example programs you can use as a starting point to customize your test and measurement system.

LabVIEW NXG 1.0 and LabVIEW 2017 are both included for any LabVIEW users with an active Standard Service Program (SSP) membership.

ni.com/labviewnwg



©2017 National Instruments. All rights reserved. LabVIEW, National Instruments, NI, and ni.com are trademarks of National Instruments. Other product and company names listed are trademarks or trade names of their respective companies.

